

DERMATOLOGY DIAGNOSTICS FOR SUCCESS!



These notes are complementary to the Team Approach to the Itchy Dog (ce.navta.net/itchydog).

For additional clinical and microscopic images, please see: Horne K, Schwassman M, Logas D.

Small Animal Dermatology for Technicians and Nurses. Wiley, 2019.

TECHNIQUES FOR FINDING MITES: SKIN SCRAPINGS ARE THE GOLD STANDARD!

DEEP SKIN SCRAPINGS FOR FOLLICULAR DEMODEX MITES:

- Squeeze the skin first.
- Scrape to capillary ooze.
- Put material on slide in extra mineral oil, coverslip, and examine.

ALTERNATIVE TO DEEP SCRAPES IS HAIR PLUCKS:

- Pluck several hairs from the lesion.
- Lay in mineral oil on slide.
- Coverslip and examine.

COUNT NUMBER of live and dead adults, juvenile forms, and eggs each time to see if treatment is effective.

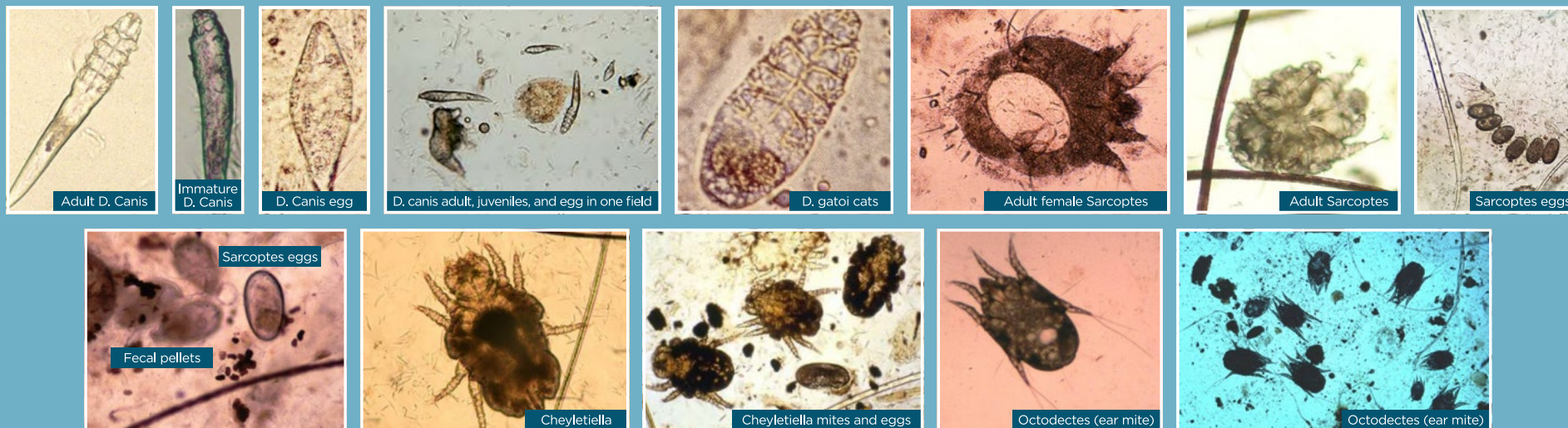
SUPERFICIAL SKIN SCRAPINGS FOR SARCOPTES, CHEYLETIELLA, NOTOEDRES, AND DEMODEX GATOI IN CATS:

- No need to squeeze the skin.
- Scrape large areas.
- Add to mineral oil on slide, coverslip, and examine.

ALTERNATIVE TO SUPERFICIAL SCRAPINGS IS THE USE OF CLEAR TAPE:

- Pat onto the lesions several times.
- Lay tape sticky side down on mineral oil.
- Add a drop of mineral oil on top of tape, coverslip, and examine.

LOWER THE CONDENSER and decrease the light to provide contrast so you can see these mites. Examine systematically at 10x for mites.



CYTOLOGY TECHNIQUES: DIFFERENT TECHNIQUES CAN BE MATCHED TO THE TYPE OF LESIONS YOU SEE. THIS MAKES YOU A CYTOLOGY SUPERSTAR!



IMPRESSION SMEAR – IDEAL FOR PUSTULES AND OTHER MOIST LESIONS:

Impression Smear: Lay glass slide on the lesion (open pustules with 25 g needle), then stain.

CLEAR TAPE CYTOLOGY – IDEAL FOR FEET, AREAS CLOSE TO MUCUOUS MEMBRANES:

- Press on Lesions.
- Put drop of stain on slide.
- Lay tape over it.

SWAB CYTOLOGY:

- Ideal for ears and folds.
- Swab the lesions then gently roll the swab over the slide.

NAILBED:

- Use a toothpick to gently scrape under the nailfold.
- Smear on slide.
- Stain and examine.

RECORD TYPE OF ORGANISM NUMBER

0= no organisms seen, occasional= <1/oil immersion field (OIF)

1= 1-5/OIF, 2= 6-10/OIF, 3= 11-20/OIF, 4= >20/OIF

