

Frequently Asked Questions

for Veterinarians



SIMBADOL™ (buprenorphine injection) Overview:

Q: What is SIMBADOL?

A: SIMBADOL is a proprietary FDA-approved, veterinary-labeled buprenorphine indicated for the control of postoperative pain associated with surgical procedures in cats.

SIMBADOL is a novel combination of dose and concentration. SIMBADOL is an immediate-release product that has been shown effective for 24 hours at a subcutaneous (SQ) dose of 0.24 mg/kg.

Q: How is SIMBADOL administered?

A: SIMBADOL is administered by a subcutaneous injection in cats only. You can use up to 3 once-daily subcutaneous doses, for a total of 72 hours of pain control.

Q: Can SIMBADOL be administered via intravenous (IV), intramuscular (IM) or oral transmucosal (TM) routes?

A: SIMBADOL is administered by a subcutaneous injection in cats only.

Q: What is the in-use shelf life of SIMBADOL?

A: 56 days from the date of first puncture. Record the date of first puncture on the vial.

Q: Where is SIMBADOL metabolized?

A: SIMBADOL contains buprenorphine (1.8 mg/mL) which is metabolized in the liver.

Q: What are the common side effects of SIMBADOL?

A: Hypotension, tachycardia, hypothermia, hyperthermia, hypertension, anorexia and hyperactivity were the most frequently reported adverse events. Hypotension, hypothermia, and anorexia occurred in the SIMBADOL and placebo control treated cats at a similar rate. Tachycardia, hyperthermia, hypertension and hyperactivity were reported at a higher rate in the SIMBADOL treated cats.

Q: How do I report suspected adverse events?

A: To report suspected adverse events, for technical assistance, or to obtain a copy of the Safety Data Sheet, contact Zoetis at 888-963-8471.

SIMBADOL Dosing, Administration and Storage:

Q: What is the duration of action for SIMBADOL?

A: While every cat responds differently, in 2 large field studies SIMBADOL was found to be effective when administered every 24 hours for up to 3 days for the control of postoperative pain associated with surgical procedures in cats.

Q: What is the recommended dose of SIMBADOL?

A: The recommended dose of SIMBADOL is 0.24 mg/kg (0.11 mg/lb).

Q: When should the first dose of SIMBADOL be given to the patient?

A: The first dose should be given approximately 1 hour prior to surgery.

Q: When can the patient receive the second and third doses of SIMBADOL?

A: The patient can be given additional doses every 24 hours after initial dose, up to 3 total doses.

Q: How many doses will one vial provide?

A: One vial provides approximately 15 individual doses based on an average cat weight of 5 kg.

Q: How is SIMBADOL stored?

A: SIMBADOL should be stored at temperatures up to 25°C (77°F) and should be protected from light and excessive heat (above 40°C or 104°F).

Additionally, SIMBADOL is a Schedule III controlled substance and should be stored in a locked, substantially constructed cabinet according to DEA and local controlled substance guidelines.



INDICATION: SIMBADOL is indicated for the control of postoperative pain associated with surgical procedures in cats.

IMPORTANT SAFETY INFORMATION

Due to serious human safety and abuse concerns, including physical or psychological dependence, life-threatening respiratory depression and additive CNS depressant effects, read the full prescribing information before using this drug, including the complete Boxed Warning. Not for use in humans. Hospital staff should be trained in the handling of potent opioids and should avoid accidental exposure. SIMBADOL has not been evaluated in breeding, pregnant, or lactating cats, in cats younger than 4 months of age or moribund cats. Do not use in cats with known hypersensitivity to buprenorphine hydrochloride or any of the components of SIMBADOL, or known intolerance to opioids. Use with caution in cats with impaired hepatic function. Adverse reactions may include hyperthermia, tachycardia, hypotension, hypertension, hypothermia, anorexia, and hyperactivity. **See attached full Prescribing Information, including the complete Boxed Warning for human safety and adverse reactions.**

Product Safety:

Q: Can SIMBADOL™ (buprenorphine injection) be used with NSAIDs in cats? Are there any drug interactions I should consider before using this product?

A: Studies have not been conducted by Zoetis to assess the safety of SIMBADOL when used in combination with NSAIDs and/or other analgesics in cats.

Q: Is the use of SIMBADOL contraindicated when used in combination with other opioids in cats?

A: Studies have not been conducted by Zoetis to assess the safety of SIMBADOL when used in combination with other opioids in cats.

Q: Can additional pain medication be administered or prescribed if the patient has received SIMBADOL?

A: Studies have not been conducted by Zoetis to assess the safety of SIMBADOL when used in combination with other pain medications in cats. Management of pain is at the discretion of the veterinarian based on the assessment of each individual patient.

Patient Profile:

Q: Are there any cats who should not receive SIMBADOL?

A: Do not use SIMBADOL in any cats with a known reaction (hypersensitivity) to buprenorphine hydrochloride or any of the components of SIMBADOL, or known intolerance to opioids.

The use of SIMBADOL has not been evaluated in breeding, pregnant, or lactating cats, or in cats younger than 4 months of age.

Safety has not been evaluated in moribund cats (i.e., those not expected to live more than 24 hours with or without surgery). Use in such cases should be based on the risk-benefit assessment made by the attending veterinarian.

Use with caution in cats with impaired hepatic function.

Q: Can SIMBADOL be administered in any species other than cats?

A: SIMBADOL is indicated only for use in cats.

Client Facing Questions:

Q: Is it safe to send SIMBADOL home with clients?

A: SIMBADOL should be used by or on the order of a licensed veterinarian. Do not dispense the drug for administration at home by the pet owner.

Due to serious human safety and abuse concerns, including physical or psychological dependence, life-threatening respiratory depression and additive CNS depressant effects, read the entire package insert before using this drug, including the complete Boxed Human Safety Warning.

Disposal:

Q: How should unused SIMBADOL be discarded?

A: Discard broached vials after 56 days. Any unused or expired vials must be destroyed by a DEA registered reverse distributor.

For further information, contact your local DEA field office or call Zoetis at 888-963-8471.



For technical assistance, please contact Zoetis at 888-963-8471.

Additionally, refer to the product's Package Insert for more detailed information on the safety of the product.

See attached full Prescribing Information, including the complete Boxed Warning for human safety and adverse reactions.

Simbadol™
(buprenorphine injection)
1.8 mg/mL

For subcutaneous use in cats
Opioid Analgesic

CAUTION:
Federal (USA) law restricts this drug to use by or on the order of a licensed veterinarian.

HUMAN SAFETY WARNING**Abuse Potential**

SIMBADOL contains buprenorphine (1.8 mg/mL), an opioid agonist and Schedule III controlled substance with an abuse potential similar to other Schedule III opioids. Buprenorphine has certain opioid properties that in humans may lead to dependence of the morphine type.

Abuse of buprenorphine may lead to physical dependence or psychological dependence.

The risk of abuse by humans should be considered when storing, administering, and disposing of SIMBADOL. Persons at increased risk for opioid abuse include those with a personal or family history of substance abuse (including drug or alcohol abuse or addiction) or mental illness (suicidal depression).

Life-Threatening Respiratory Depression

Respiratory depression, including fatal cases, may occur with abuse of SIMBADOL.

Additive CNS Depressant Effects

SIMBADOL has additive CNS depressant effects when used with alcohol, other opioids, or illicit drugs that cause central nervous system depression.

Accidental Exposure

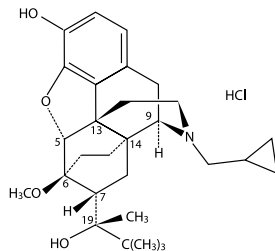
Because of the potential for adverse reactions associated with accidental injection, SIMBADOL should only be administered by veterinarians or veterinary technicians who are trained in the handling of potent opioids.

See Human Safety for detailed information.

DESCRIPTION:

SIMBADOL is a clear, colorless to slightly yellow, sterile, injectable solution intended for subcutaneous administration for use in cats. Each milliliter of SIMBADOL contains 1.8 mg buprenorphine (equivalent to 1.94 mg buprenorphine hydrochloride), 50 mg anhydrous dextrose, 1.8 mg methylparaben, 0.2 mg propylparaben, 0.2 mg sodium acetate trihydrate, 0.5 mg glacial acetic acid, 100.0 mg anhydrous ethanol, water for injection, and hydrochloric acid and/or sodium hydroxide to adjust pH.

Buprenorphine belongs to the opioid class of drugs and is a narcotic under the Controlled Substances Act due to its chemical derivation from thebaine. Buprenorphine hydrochloride is a weakly acidic, white or off-white crystalline powder with limited solubility in water. Chemically, it is 17-(cyclopropylmethyl)- α -(1,1-dimethylethyl)-4,5-epoxy-18,19-dihydro-3-hydroxy-6-methoxy- α -methyl-6,14-ethenomorphinan-7-methanol, hydrochloride [5 α ,7 α (S)]. Buprenorphine hydrochloride has the molecular formula of C₂₉H₄₁NO₄•HCl, the molecular weight of 504.09, and the following structural formula:

**INDICATION:**

SIMBADOL is indicated for the control of postoperative pain associated with surgical procedures in cats.

DOSAGE AND ADMINISTRATION:

The dosage of SIMBADOL is 0.24 mg/kg (0.11 mg/lb) administered subcutaneously once daily, for up to 3 days. Administer the first dose approximately 1 hour prior to surgery.

Do not dispense SIMBADOL for administration at home by the pet owner (see Human Safety).

CONTRAINDICATIONS:

SIMBADOL is contraindicated in cats with known hypersensitivity to buprenorphine hydrochloride or any of the components of SIMBADOL, or known intolerance to opioids.

WARNINGS:

For subcutaneous (SQ) injectable use in cats.

Human Safety:

Not for use in humans. Keep out of reach of children.

Adult Human User Safety while handling SIMBADOL in the hospital:**Mucous membrane or eye contact during administration:**

Direct contact of SIMBADOL with the eyes, oral or other mucous membranes could result in absorption of buprenorphine and the potential for adverse reactions. If accidental eye, oral or other mucous membrane contact is made during administration, flush the area with water and contact a physician.

Skin contact during administration:

If human skin is accidentally exposed to SIMBADOL, wash the exposed areas with soap and water and contact a physician. Accidental exposure could result in absorption of buprenorphine and the potential for adverse reactions.

Drug Abuse, Addiction, and Diversion of Opioids:**Controlled Substance:**

SIMBADOL contains buprenorphine, a mu opioid partial agonist and Schedule III controlled substance with an abuse potential similar to other Schedule III opioids. SIMBADOL can be abused and is subject to misuse, abuse, addiction, and criminal diversion. SIMBADOL should be handled appropriately to minimize the risk of diversion, including restriction of access, the use of accounting procedures, and proper disposal methods, as appropriate to the clinical setting and as required by law.

Abuse:

Abuse of SIMBADOL poses a hazard of overdose and death. This risk is increased with concurrent abuse of alcohol and other substances including other opioids and benzodiazepines.



Buprenorphine has been diverted for non-medical use into illicit channels of distribution. All people handling opioids require careful monitoring for signs of abuse. Drug abuse is the intentional non-therapeutic use of a prescription drug for its rewarding psychological or physiological effects. Abuse of opioids can occur in the absence of true addiction.

Storage and Discard:

SIMBADOL is a Class III opioid. Store in a locked, substantially constructed cabinet according to DEA and local controlled substance guidelines. Discard broached vials after 56 days. Any unused or expired vials must be destroyed by a DEA registered reverse distributor; for further information, contact your local DEA field office or call Zoetis Inc. at 1-888-963-8471.

Information for physician:

SIMBADOL injectable solution is a mu opioid partial agonist (1.8 mg buprenorphine/mL). In the case of an emergency, provide the physician with the package insert. Naloxone may not be effective in reversing respiratory depression produced by buprenorphine. The onset of naloxone effect may be delayed by 30 minutes or more. Doxapram hydrochloride has also been used as a respiratory stimulant.

PRECAUTIONS:

Hyperactivity (opioid excitation) has been observed up to 8 hours after anesthetic recovery (see ADVERSE REACTIONS).

Safety has not been evaluated in moribund cats (i.e., those not expected to live more than 24 hours with or without surgery). Use in such cases should be based on the risk-benefit assessment of the veterinarian.

Use with caution in cats with impaired hepatic function.

The use of SIMBADOL has not been evaluated in breeding, pregnant, or lactating cats, or in cats younger than 4 months of age.

ADVERSE REACTIONS:

In two controlled field studies, a total of 450 male and female cats 4 months to 16 years old, weighing between 2.6 – 20.0 lb were included in the field safety analysis. In one study, cats underwent a soft tissue surgical procedure (soft tissue). In the other study, cats underwent onychectomy, onychectomy and castration, or onychectomy and ovariohysterectomy (orthopedic). The following tables (one table for each study) show the number of cats exhibiting each observation.

Adverse Reactions in the Soft Tissue Field Study

| Adverse Reaction ^a | SIMBADOL (N = 109) | | Control (N = 112) | |
|---|-----------------------------|---------------|-----------------------------|---------------|
| | During Surgery ^b | After Surgery | During Surgery ^b | After Surgery |
| Hypotension ^c | 39 (35.8%) | 29 (26.6%) | 33 (29.5%) | 24 (21.4%) |
| Tachycardia ^d | 26 (23.9%) | 29 (26.6%) | 15 (13.4%) | 20 (17.9%) |
| Hypothermia ($\leq 98.0^{\circ}\text{F}$) | 30 (27.5%) | 1 (0.9%) | 31 (27.7%) | 0 |
| Hyperthermia ($\geq 103.0^{\circ}\text{F}$) | 0 | 40 (36.7%) | 0 | 19 (17.0%) |
| Hypertension ^e | 7 (6.4%) | 20 (18.3%) | 9 (8.0%) | 6 (5.4%) |
| Anorexia | 0 | 18 (16.5%) | 0 | 15 (13.4%) |
| Hyperactivity | 0 | 10 (9.2%) | 0 | 4 (3.6%) |
| Reduced Oxygen Saturation of Hemoglobin (pulse oximetry $\leq 90\%$) | 5 (4.6%) | 1 (0.9%) | 8 (7.1%) | 0 |
| Bradycardia (≤ 90 beats/min) | 2 (1.8%) | 1 (0.9%) | 1 (0.9%) | 0 |
| Tachypnea (≥ 72 breaths/min) | 0 | 3 (2.8%) | 0 | 2 (1.8%) |
| Arrhythmia | 1 (0.9%) | 0 | 1 (0.9%) | 0 |
| Hyperesthesia | 0 | 1 (0.9%) | 0 | 0 |
| Blindness | 0 | 1 (0.9%) | 0 | 0 |
| Apnea/Death | 0 | 1 (0.9%) | 0 | 0 |

a. Cats may have experienced more than one type or occurrence of an adverse reaction. Cats experiencing the same reaction both during and after surgery are presented in both time periods.

b. During surgery is the time from the administration of the anesthetic induction agent until discontinuation of the gas anesthetic.

c. Hypotension is defined as a mean blood pressure of ≤ 60 mmHg during surgery and ≤ 90 mmHg after surgery.

d. Tachycardia is defined as a heart rate ≥ 180 beats per minute during surgery and ≥ 200 beats per minute after surgery.

e. Hypertension is defined as a mean blood pressure of ≥ 120 mmHg during surgery and ≥ 160 mmHg after surgery.

Adverse Reactions in the Orthopedic Field Study

| Adverse Reaction ^a | SIMBADOL (N = 115) | | Control (N = 114) | |
|---|-----------------------------|---------------|-----------------------------|---------------|
| | During Surgery ^b | After Surgery | During Surgery ^b | After Surgery |
| Tachycardia ^c | 29 (25.2%) | 44 (38.3%) | 15 (13.2%) | 24 (21.1%) |
| Hypotension ^d | 29 (25.2%) | 22 (19.1%) | 27 (23.7%) | 16 (14.0%) |
| Hyperthermia ($\geq 103.0^{\circ}\text{F}$) | 1 (0.9%) | 51 (44.3%) | 0 | 14 (12.3%) |
| Anorexia | 0 | 22 (19.1%) | 0 | 20 (17.5%) |
| Hypertension ^e | 3 (2.6%) | 20 (17.4%) | 8 (7.0%) | 12 (10.5%) |
| Hypothermia ($\leq 98.0^{\circ}\text{F}$) | 8 (7.0%) | 0 | 16 (14.0%) | 0 |
| Hyperactivity | 0 | 16 (13.9%) | 0 | 7 (6.1%) |
| Bradycardia (≤ 90 beats/min) | 3 (2.6%) | 0 | 3 (2.6%) | 1 (0.9%) |
| Tachypnea (≥ 72 breaths/min) | 0 | 2 (1.8%) | 1 (0.9%) | 4 (3.5%) |

Adverse Reactions in the Orthopedic Field Study (continued)

| Adverse Reaction ^a | SIMBADOL (N = 115) | | Control (N = 114) | |
|---|-----------------------------|---------------|-----------------------------|---------------|
| | During Surgery ^b | After Surgery | During Surgery ^b | After Surgery |
| Reduced Oxygen Saturation of Hemoglobin (pulse oximetry $\leq 90\%$) | 3 (2.6%) | 0 | 3 (2.6%) | 0 |
| Arrhythmia | 0 | 1 (0.9%) | 1 (0.9%) | 0 |
| Blindness | 0 | 1 (0.9%) | 0 | 1 (0.9%) |
| Ataxia | 0 | 1 (0.9%) | 0 | 0 |
| Apnea/Death | 1 (0.9%) | 0 | 0 | 0 |

- a. Cats may have experienced more than one type or occurrence of an adverse reaction. Cats experiencing the same reaction both during and after surgery are presented in both time periods.
 b. During surgery is the time from the administration of the anesthetic induction agent until discontinuation of the gas anesthetic.
 c. Tachycardia is defined as a heart rate ≥ 180 beats per minute during surgery and ≥ 200 beats per minute after surgery.
 d. Hypotension is defined as a mean blood pressure of ≤ 60 mmHg during surgery and 90 mmHg after surgery.
 e. Hypertension is defined as a mean blood pressure of ≥ 120 mmHg during surgery and ≥ 160 mmHg after surgery.

The two cats with apnea in the SIMBADOL™ (buprenorphine injection) group died from the adverse reaction. The cat in the soft tissue study underwent a necropsy and a specific cause of death was not found, although other remarkable findings included metastatic neoplasia affecting multiple systems. The cat in the orthopedic study experienced apnea during endotracheal intubation. The cat was healthy and a specific cause of death was not found.

Two cats in the SIMBADOL group and one cat in the placebo control group were reported with presumptive post-anesthetic cortical blindness. Both cats in the SIMBADOL group received blood pressure intervention during surgery for low blood pressure. All cats regained vision within 7 to 84 days after surgery; however, one cat in the SIMBADOL group continued to have some visual and balance deficits.

One cat in the SIMBADOL group in the soft tissue study was euthanized after completion of the study due to pulmonary complications. The complications were considered likely related to the severity of the cat's injuries prior to surgery.

Post-Approval Experience (July, 2017):

The following adverse events are based on post-approval adverse drug experience reporting. Not all adverse events are reported to FDA/CVM. It is not always possible to reliably estimate the adverse event frequency or establish a causal relationship to product exposure using these data. The following adverse events reported for cats are listed in decreasing order of reporting frequency for SIMBADOL: Abnormal behaviors (e.g., hyperactivity, agitation, disorientation, hiding), mydriasis, hyperthermia, anorexia, lethargy, ataxia, and sedation.

To report suspected adverse events, for technical assistance, or to obtain a copy of the Safety Data Sheet (SDS), contact Zoetis Inc. at 1-888-963-8471.

For additional information about adverse drug experience reporting for animal drugs, contact the FDA at 1-888-FDA-VETS or online at <http://www.fda.gov/AnimalVeterinary/SafetyHealth>.

CLINICAL PHARMACOLOGY:

Buprenorphine is a potent, long-acting analgesic acting at opiate receptors in the central nervous system. Buprenorphine exerts its analgesic effect via high affinity binding to various subclasses of opiate receptors, particularly μ , in the central nervous system.¹ Buprenorphine binds to opiate receptors with high affinity and high receptor avidity, such that its disassociation from the receptor is slow, as demonstrated in *in vitro* studies. This unique property of buprenorphine could account for its duration of activity.¹

Following subcutaneous injection in cats, there is considerable inter-cat variability in plasma concentration and pharmacokinetic parameters.² Formulated as an immediate release product, buprenorphine is quickly absorbed after subcutaneous injection. Pharmacological effects (e.g., mydriasis) may occur within minutes after injection. Buprenorphine plasma concentrations following subcutaneous injection did not appear to correlate to pharmacodynamics measurements (change in the thermal threshold data). In studies with SIMBADOL analgesic effects of buprenorphine appeared about one hour after injection with a 24 to 28 hour duration of action. Combined pharmacokinetic and pharmacodynamic studies have demonstrated a marked time delay between plasma concentrations and the onset and offset of the analgesic effect which is due to the slow equilibration between drug concentrations in the biophase and the slow association and dissociation of drug binding to the receptor.^{2,3}

Buprenorphine is metabolized in the liver. The major route of excretion of buprenorphine is in the feces. Buprenorphine undergoes oxidative metabolism by N-dealkylation to form norbuprenorphine (an active metabolite) via CYP3A4. Buprenorphine and norbuprenorphine subsequently form inactive glucuronide conjugates in the intestinal wall and the liver and its metabolites are excreted via the bile into the gastro-intestinal tract.⁴ The elimination half-life in cats is reported to be similar to that associated with humans and slower than that observed in dogs.⁵ It is also noted that because the cat is devoid of uridine diphosphate glucuronosyltransferase enzymes, conjugated metabolites may be absent.⁵

EFFECTIVENESS:

The effectiveness of SIMBADOL was demonstrated in two randomized, masked, placebo-controlled, multi-site field studies involving client-owned cats of various breeds. In one study (soft tissue), 221 cats underwent a soft tissue surgical procedure. In the other study (orthopedic), 229 cats underwent an onychectomy alone or in combination with castration or ovariectomy. Cats received either a subcutaneous injection of 0.24 mg/kg of SIMBADOL or physiologic saline approximately 60 minutes prior to surgery at the same time as pre-anesthetic medication. SIMBADOL or physiologic saline was given once daily for two additional treatments 24 and 48 hours after the initial treatment. A descriptive, interactive pain assessment system was used by the trained assessor over the 72 hour post-operative period to determine pain control. Treatment success was defined as a cat that made it through the entire 72 hour period without rescue analgesia. In the soft tissue field study, a statistically significant difference in the proportion of treatment successes in the SIMBADOL treatment group (66/93 or 71.0%) compared to the placebo control group (45/102 or 44.1%) was observed. Twenty-seven out of 93 (29.0%) SIMBADOL cases and 57 out of 102 (55.9%) placebo cases were treatment failures. In the orthopedic field study, a statistically significant difference in the proportion of treatment successes in the SIMBADOL treatment group (64/105 or 61.0%) compared to the placebo control group (33/102 or 32.4%) was observed. Forty-one out of 105 (39.0%) SIMBADOL cases and 69 out of 102 (67.6%) placebo

cases were treatment failures. For both studies, the majority of the treatment failures required rescue within 4 hours after anesthetic recovery.

Combining both studies (450 cats), sedation was observed in 68 cats in the buprenorphine group and 62 cats in the placebo control group for up to 4 hours after anesthetic recovery. In both studies, during surgery, mean respiratory rates and mean blood pressures were lower in the buprenorphine group compared to the placebo control group. There were a higher number of cats and a higher number of incidences of pain on injection in the buprenorphine group (20 cats, 28 incidences) compared to the placebo control group (8 cats, 10 incidences).

The results of two field studies demonstrate that SIMBADOL is effective and has an acceptable safety margin for the control of postoperative pain in cats.

ANIMAL SAFETY:

Nine-Day Target Animal Safety Study: In a 9 day safety study, 4 month old healthy cats (4/sex/group) were administered SIMBADOL subcutaneously at 0X (saline), 1X (0.24 mg/kg), 3X (0.72 mg/kg), or 5X (1.2 mg/kg) once daily. All 32 cats survived to study termination.

Buprenorphine-related clinical observations included difficulty in handling, lower incidence of urination, abnormal oral dryness, dilated pupils, and decreased pupillary light reflex. The incidence of temperatures $\geq 103^\circ\text{F}$ was higher in the buprenorphine-treated groups compared to the control group. The highest temperature observed in the buprenorphine-treated group was 103.8°F in a 5X cat.

One 1X cat and one 3X cat experienced an episode of hyperactivity, difficulty in handling, slight disorientation, agitation, dilated pupils (which were responsive to light), and respiratory sinus arrhythmia. One 1X cat (one episode) and one 3X cat (three episodes) were reported with nystagmus. One 1X and one 3X cat were reported with decreased blink response (one episode). Three cats in the 5X group lost body weight (79 g or less) during the study which correlated with decreased food consumption. All other cats gained weight during the study.

The incidence of "moderate responses" (minor vocalization or wincing and quick resolution) and "severe responses" (tried to bite or scratch or had marked vocalization or persistent attention to the injection site) to injection was higher in the buprenorphine-treated groups compared to the control group.

Respiratory rate, heart rate, and blood pressure were similar between all groups, including the control group.

Buprenorphine-related clinical pathology findings included an increase in creatine kinase values in the 3X and 5X groups and correlated with subcutaneous inflammation at the injection sites.

Histologic lesions included minimal to moderate subacute inflammation at the injection sites, which correlated with the administration of buprenorphine compared to the control group. The incidence of inflammation was similar between buprenorphine-treated groups; however, more sites with mild and moderate inflammation were observed in the 5X group compared to the 1X and 3X groups where more sites with minimal inflammation were observed. Mineralization at an injection site was seen in one 1X and one 3X cat. Chronic inflammation in the heart (valve or myocardium) was seen in two 5X cats. Subacute liver inflammation was seen in one control cat, two 1X cats, three 3X cats, and three 5X cats. Lymphoid hyperplasia of the mediastinal lymph node was seen in one 1X cat, and acute inflammation was seen in the mediastinal lymph node of one 3X cat. Lymphoid hyperplasia of the Peyer's Patches was seen in two 1X cats and one 5X cat. Lymphoid hyperplasia, lymphocytic infiltrate, or subacute inflammation of the stomach was seen in four 1X cats, four 3X cats, and three 5X cats. Subacute inflammation or lymphocytic infiltrate of the thyroid glands was seen in two 1X cats, one 3X cat, and four 5X cats.

Arterial Blood Pressure Study in Cats: Healthy 8.5 to 29.1 month old cats (4/sex/group) were subcutaneously administered SIMBADOL at 0.24 mg/kg (1X) or meloxicam (control), 1 hour prior to anesthetic induction for a 1 hour exploratory laparotomy. Arterial blood pressure was monitored following anesthetic induction and through laparotomy, with indirect blood pressure monitoring prior to anesthesia and for 8 hours following anesthetic recovery. All 16 animals were clinically healthy for the duration of the study. There were no differences between treatment groups in mean blood pressure during the study.

During surgery and postoperatively, heart rate was higher for the buprenorphine group. During surgery, the incidence of heart rates ≥ 180 beats/minute was higher in the buprenorphine-treated group compared to the control group. Post-operatively, the incidence of heart rates ≥ 200 beats/minute was higher in the buprenorphine-treated group compared to the control group. During surgery, respiration rate was lower for the buprenorphine group. Post-operatively, body temperature was higher for the buprenorphine group. Four cats in the buprenorphine group had temperatures $\geq 103^\circ\text{F}$ post-operatively compared to none in the control group. The highest temperature observed in the buprenorphine group was 104.3°F . Electrocardiograms were qualitatively normal in all cats. During surgery, one cat in the buprenorphine group had hemoglobin saturation less than 90% (88% at one time point).

STORAGE INFORMATION:

Store at temperatures up to 25°C (77°F). Protect from light and excessive heat (above 40°C or 104°F). Use within 56 days of first puncture.

HOW SUPPLIED:

SIMBADOL (buprenorphine injection) is supplied in a carton containing one 10 mL amber glass vial. Each multidose vial contains 1.8 mg/mL of buprenorphine.

NADA 141-434, Approved by FDA

REFERENCES:

1. Heel RC, Brogden RN, Speight TM, et al. Buprenorphine: a review of its pharmacological properties and therapeutic efficacy. *Drugs* 1979;17:81-110.
2. Steagall PV, Pelligand L, Giordano T, et al. Pharmacokinetic and pharmacodynamic modelling of intravenous, intramuscular and subcutaneous buprenorphine in conscious cats. *Vet Anaesth Analg* 2013;40:83-95.
3. Robertson SA, Lascelles BD, Taylor PM, et al. PK-PD modeling of buprenorphine in cats: intravenous and oral transmucosal administration. *J Vet Pharmacol Ther* 2005;28:453-460.
4. Brewster D, Humphrey MJ, McLeavy MA. Biliary excretion, metabolism and enterohepatic circulation of buprenorphine. *Xenobiotica* 1981;11:189-196.
5. Court MH. Feline drug metabolism and disposition: pharmacokinetic evidence for species differences and molecular mechanisms. *Vet Clin Small Anim* 2013;43:1039-1054.

zoetis

Distributed by:
Zoetis Inc.
Kalamazoo, MI 49007

Product of United Kingdom

Revised: July 2017

50270801A&P